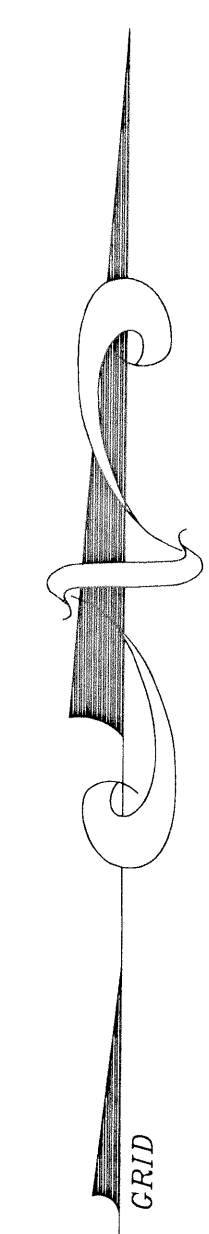
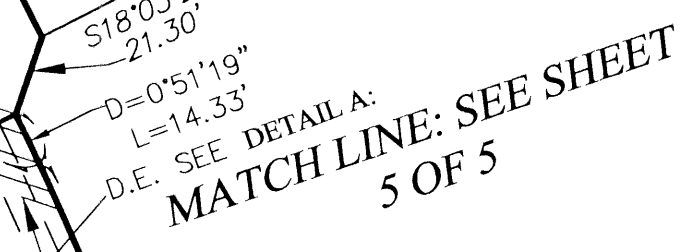
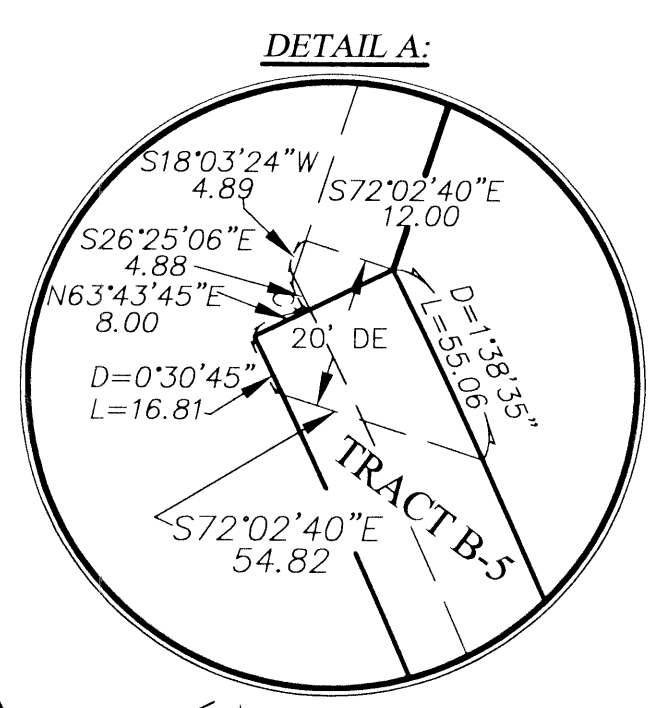
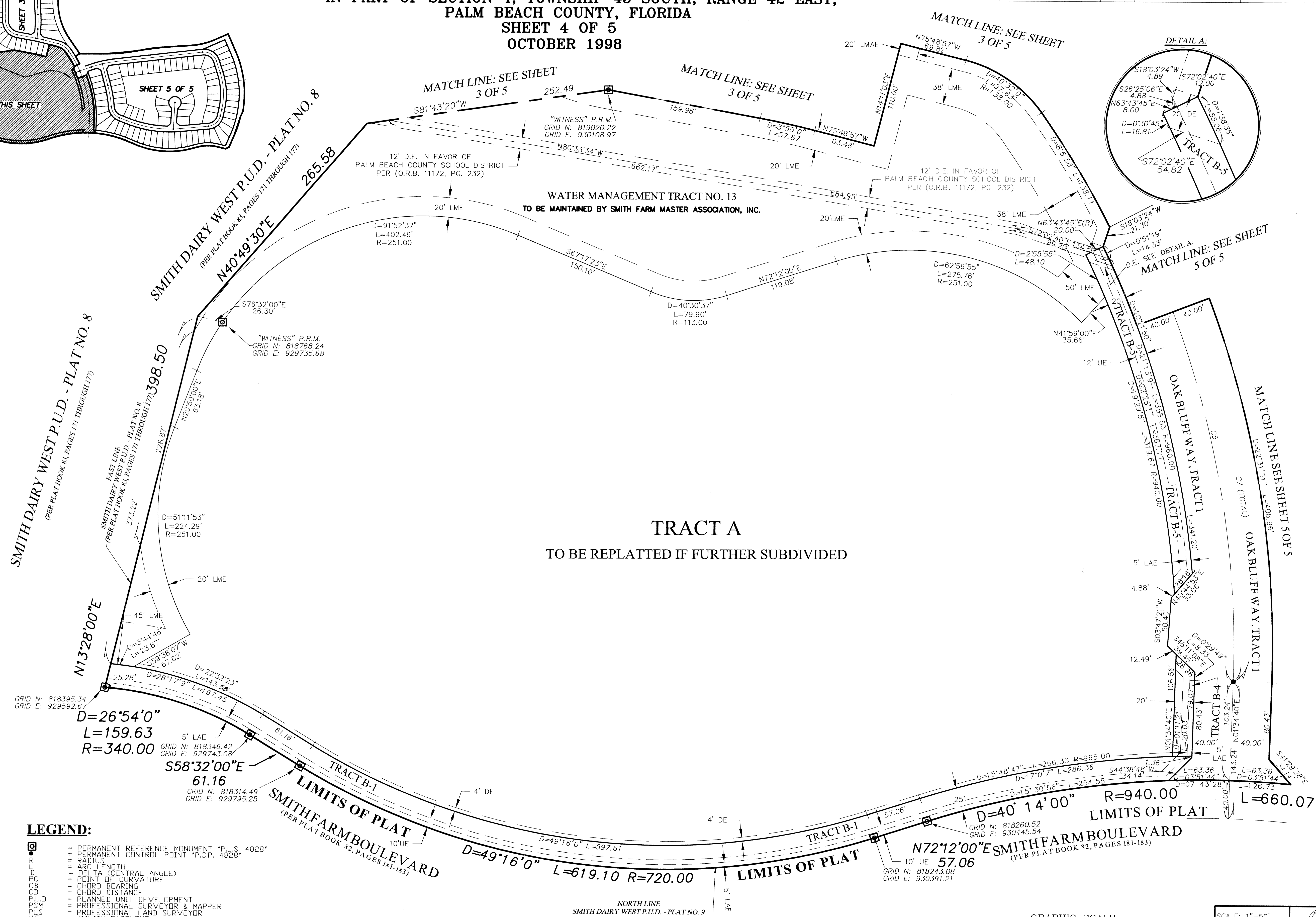
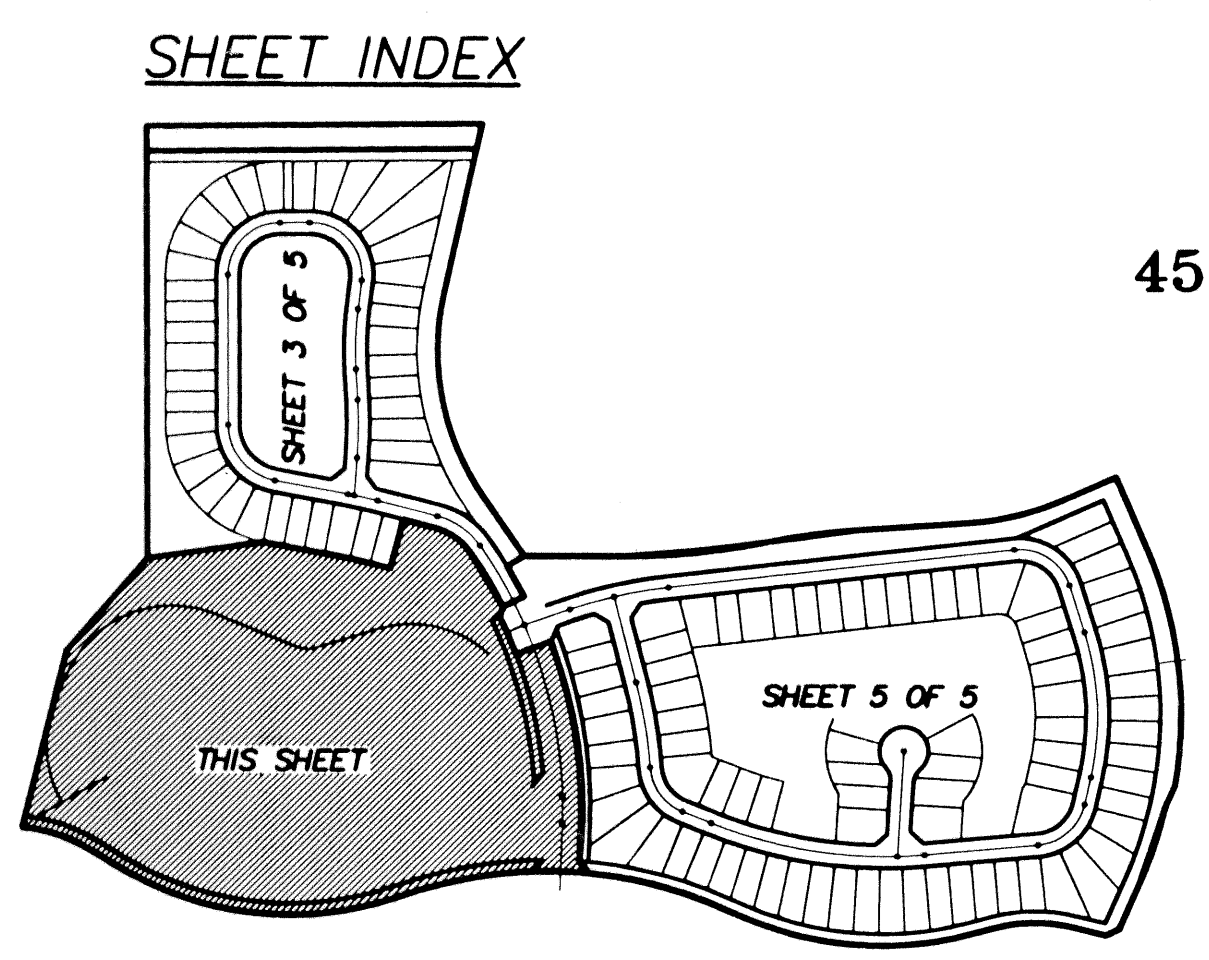
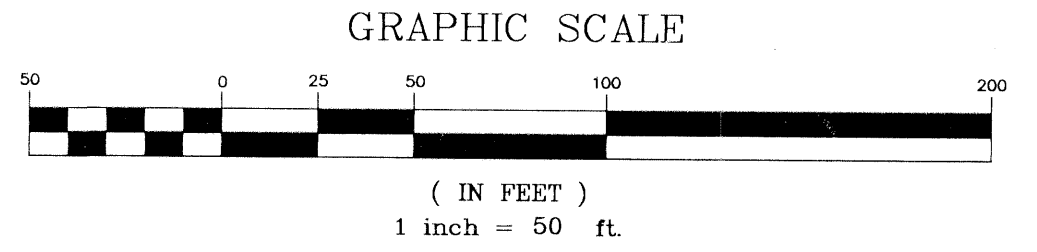


SMITH DAIRY WEST P.U.D. - PLAT No. 10
 BEING A REPLAT OF PART OF BLOCKS 38 AND 39 OF PALM BEACH FARMS
 COMPANY PLAT No. 3, AS RECORDED IN PLAT BOOK 2, PAGES
 45 THROUGH 54 OF THE PUBLIC RECORDS OF PALM BEACH COUNTY, FLORIDA
 IN PART OF SECTION 4, TOWNSHIP 45 SOUTH, RANGE 42 EAST,
 PALM BEACH COUNTY, FLORIDA
 SHEET 4 OF 5
 OCTOBER 1998

CURVE TABLE					
CURVE	CENTRAL ANGLE	LENGTH	RADIUS	CHORD BEARING	CHORD DISTANCE
C5	25°31'21"	445.45	1000.00	N11°11'01"W	441.78
C7	36°51'37"	643.33	1000.00	N16°51'08"W	632.30



- LEGEND:**
- ◻ PERMANENT REFERENCE MONUMENT *P.L.S. 4828*
 - PERMANENT CONTROL POINT *P.C.P. 4828*
 - ARC LENGTH
 - Δ DELTA (CENTRAL ANGLE)
 - ∠ POINT OF CURVATURE
 - CHORD BEARING
 - CHORD DISTANCE
 - PLANNED UNIT DEVELOPMENT
 - PROFESSIONAL SURVEYOR & MAPPER
 - PROFESSIONAL LAND SURVEYOR
 - UTILITY EASEMENT
 - DRAINAGE EASEMENT
 - LAKE MAINTENANCE EASEMENT
 - NORTHING (GRID)
 - EASTING (GRID)
 - RADIAL
 - LIMITED ACCESS EASEMENT
 - MAINTENANCE ROOF EAVE EASEMENT
 - LAKE MAINTENANCE ACCESS EASEMENT
 - OFFICIAL RECORDS BOOK
 - PAGE



SCALE: 1"=50'
 DATE: OCT. 1998

NMI NICK MILLER, INC.
 Surveying & Mapping Consultants

SMITH DAIRY WEST P.U.D. - PLAT NO 10

2560 RCA Blvd., Suite 105
 Palm Beach Gardens, Florida 33410
 (561) 627-5200
 D.B.P.R. Business License No. 4318

DRAWING NUMBER
 94014FT

South Dairy West Plat #10
 180
 B
 49
 Smith Dairy West